

COLD CHAIN DATA LOGGING

MONITORING CHILLED AND FROZEN GOODS



Dimension 67x48mm

FEATURES

- * DATA LOGGERS FOR MONITORING CHILLED GOODS, FROZEN GOODS AND RIPENING GOODS
- * NO SET-UP REQUIRED. ONE BUTTON PRESS-TO-START LOGGING
- * PRE-CONFIGURED WITH APPROPRIATE SAMPLE RATES AND ALARM THRESHOLDS FOR EACH APPLICATION
- * REUSABLE WITH 12+ MONTHS BATTERY LIFE
- * VARIOUS EXPORT OPTIONS INCLUDING PDF, MICROSOFT EXCEL AND JPEG

ACCESSORY

- * EA SYCC-1-BAG: PACK OF 5 WATERPROOF BAGS FOR DATA LOGGER DURING USE

ORDERING INFORMATION

COLD CHAIN DATA LOGGER +8°C/+2°C/10 MINUTES
COLD CHAIN DATA LOGGER -16°C/-20°C/10 MINUTES
COLD CHAIN DATA LOGGER +14°C/+12°C/10 MINUTES
PACK OF 5 WATERPROOF BAGS

EA SYCC-1-001
EA SYCC-1-002
EA SYCC-1-003
EA SYCC-1-BAG

DESCRIPTION

Each of the three Cold Chain loggers comes pre-configured for use in your particular application – simply press the button to start logging. During a logging session, pressing the button will light up the status LEDs to give a quick indication as to whether the temperature has exceeded an alarm condition at any point. Once your session has been completed, tear open the IP67-rated plastic wallet to reveal the USB connector and plug it in to your PC. Use the free EasyLog CC software for Windows to download and graph the data, and then prime your logger for its next use.

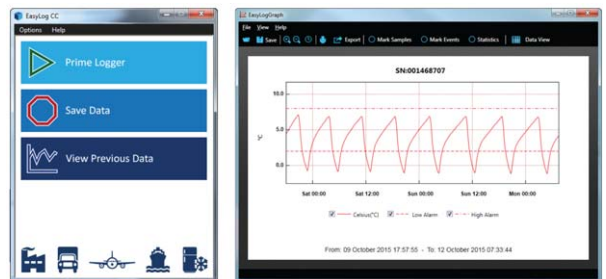
SPECIFICATIONS

Measurement range	-30 to +60°C (-22 to +140°F)
Accuracy (overall error)	±0.5°C maximum (±1°F)
Resolution	0.1°C (0.1°F)
Battery Life	12 months (minimum)
IP Rating	IP67*
Readings	32,600

* The data logger is protected against moisture to IP67 standard when housed in a BAG or equivalent.

EASYLOG CC SOFTWARE

The simple-to-use software allows you to view the data graphically, in a table or export it in various formats for use in further reporting.



MODEL SPECIFIC

This unit can be quickly customized for use in multiple markets. If you have a specific monitoring application, that requires different sample rates or alarm thresholds, call us today.

	Chilled Goods	Frozen Goods	Ripening Goods
High Alarm Level	8°C	-16°C	14°C
Low Alarm Level	2°C	-20°C	12°C
Logging Interval	10 minutes (220 days)	10 minutes (220 days)	10 minutes (220 days)
Part Number	EA SYCC-1-001	EA SYCC-1-002	EA SYCC-1-003

DIMENSION (IN MM)

